

HORIZONTAL SUBMERSIBLE MIXERS

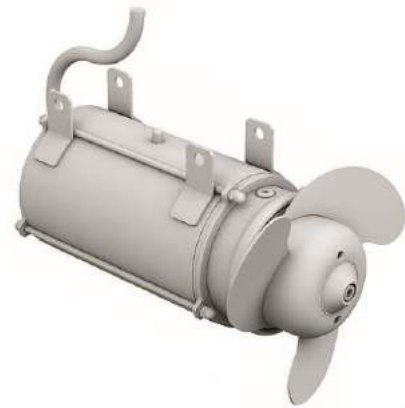
Mixing wastewater

DESCRIPTION

Our EQUIP MIXER horizontal mixers meet the mixing requirements of municipal and industrial wastewater. Our models allow undissolved particles to stay mixed by preventing sedimentation and thus facilitating the treatment process. The materials used for our mixers guarantee durability and efficiency even in the most extreme conditions.



EMB - 2 BLADES



EMX - 3 BLADES

BENEFITS

- High axial thrust efficiency. Electric motor, mechanical components and propeller profile designed to achieve high efficiency in terms of axial thrust and low energy consumption. Data according to ISO 21630 Standard.
- Double thermal probes, immersed in the stator, prevent overheating of the electric motor and preserve its operating life.
- Humidity probe (on request) installed in the gearbox to prevent damage in the case of leakage.
- Propeller in stainless steel with self-cleaning profile.

HORIZONTAL SUBMERSIBLE MIXERS

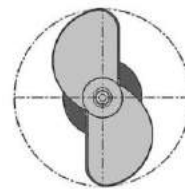
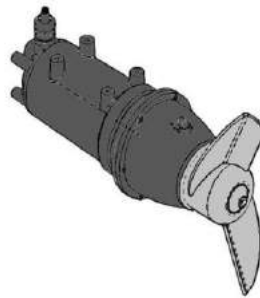
Mixing wastewater

FEATURES EQUIP MIXER

- Asynchronous 3 phases motors with squirrel cage rotor.
- 2 thermic probes installed in the stator winding.
- Protection IP68.
- "F" class insulation.
- Max submergence depth: 20m.
- Max solid content in the liquid: 12%
- Submersible H07-RN-F neoprene cable.
- Fluid pH 5÷12.
- Max temperature of pumped liquid: 40°C.
- Continuous service.

EQUIP MIXER - MODEL EMB

- ➔ Double seal system composed of two lip seals on a ceramic bushing and tungsten carbide mechanical seal.
- ➔ Planetary gearbox in order to reduced energy consumption and longer gear life.
- ➔ Propeller in stainless steel 304
- ➔ Cast iron body



Model EQUIP MIXERS EMB	Number of blades	RPM	Capacity m³/h	Axial force Newton	Power kW	Voltage V	Absorbed intensity Amps (at 400V)	Number of Cable	Wiring		Line						
									Number of cable conductors per section mm²	Cable length m	Direct	Y - Δ					
1.5/6/3B	3	925	643	230	1.5	230 - 400	4.2	1	9x1.5	10	Y						
2.2/6/3B		940	876	313	2.2		5.9				Y						
2.2/4/2B		323	1333	441	2.2		5.3				Y						
3/4/2B		323	1581	580	3		6.8				Y						
4/4/2B		320	2146	853	4		9.1				Δ						
5.5/4/2B	2	326	2391	981	5.5	400 - 690	12.5	1	9x2.5	10	Δ	Y - Δ					
7.5/4/2B		328	3254	1520	7.5		15.8				Δ	Y - Δ					
9/4/2B		328	3628	1826	9		19				Δ	Y - Δ					
11/4/2B		351	3977	2158	11		23.5				Δ	Y - Δ					
15/4/2B		351	5335	2697	15		30				Δ	Y - Δ					
18.5/4/2B		354	6884	3826	18.5		36				Δ	Y - Δ					
													9x4			Δ	Y - Δ
																Δ	Y - Δ

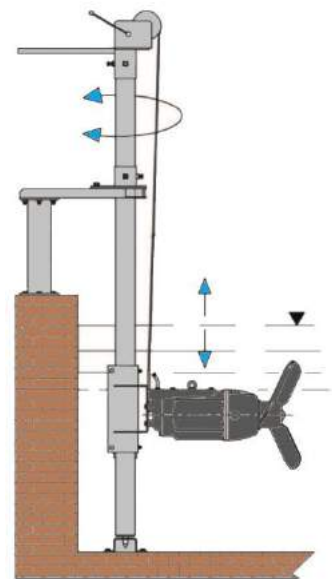
HORIZONTAL SUBMERSIBLE MIXERS

Mixing wastewater

APPLICATIONS

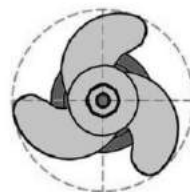
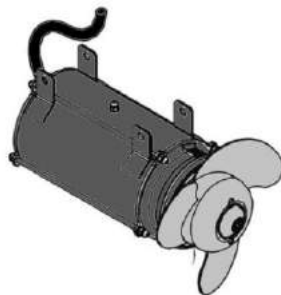
- Mixing of municipal and industrial wastewater
- Mixing of animal slurries
- Biogas plants
- Treatment of sewage sludge
- And many other applications

TYPICAL INSTALLATION



EQUIP MIXER - MODEL EMX

- ➔ Sturdy over time in a corrosive environment
- ➔ Body in stainless steel 316 L
- ➔ Propeller stainless steel 316 L



Model EQUIP MIXERS EMX	Number of blades	RPM	Capacity m ³ /h	Axial force Newton	Power kW	Voltage V	Absorbed intensity A (at 400V)	Wiring			Line	
								Number of Cable	Number of cable conductors per section mm ²	Cable length m	Direct	Y - Δ
0.75/4/3B	3	1400	279	117	0.75	400	2.2	1	6x1.5	10	Y	
1.1/4/3B		1380	360	206	1.1		2.8				Y	
1.5/6/3B		925	643	230	1.5		4.2				Y	
2.2/6/3B		940	876	313	2.2		5.9				Y	
3/6/3B		935	1061	373	3		8				Y	