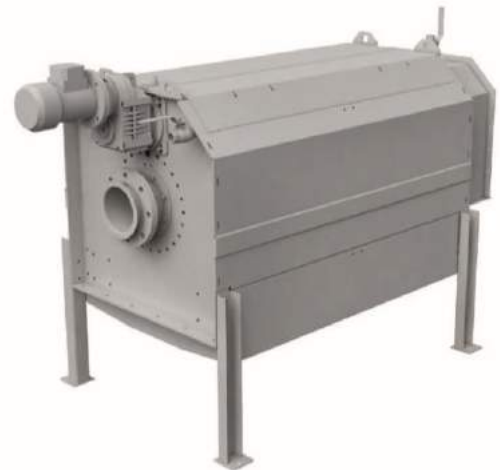


INTERNALLY FED DRUM SCREEN

Screening by Rotating Cylinder

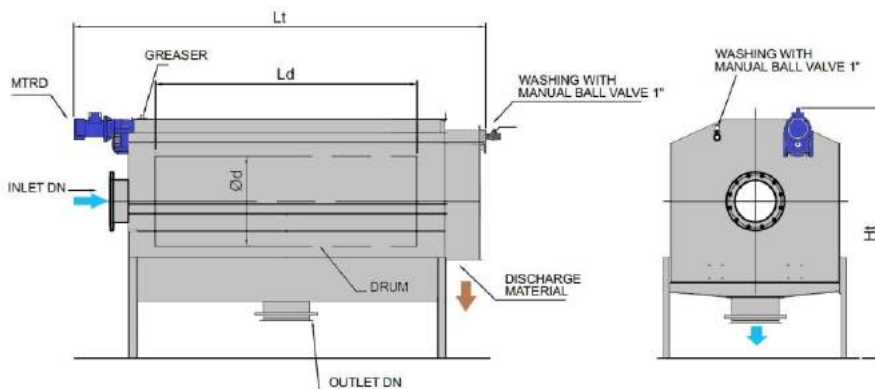
DESCRIPTION

DRUM SCREEN is an internally fed screening device with the flow being fed and distributed inside a screening cylinder. The stainless steel cylinder designed with wedge wire mesh or perforated holes from 0,25 to 6 mm provide the best screening/solids capture performance in all screening applications.



OPERATION

The raw water is fed in the internal rotating surface of the screen. Solids remain on the surface of the screen while the liquid goes through the screen. As the screening cylinder rotates, the solids drop off one diverter flight to the next until they reach the discharge. A spraying/backwash system located on the upper half of the unit, will wash off any solids, grease or other materials sticking to the face of the screen and keep the perforation clean.



BENEFITS

- ➔ Most efficient screening technology
- ➔ Capture everything
- ➔ Structure & Drum in stainless steel

MODEL	IDS 500	IDS 1000	IDS 1200	IDS 1500	IDS 2000	IDS 3000
Max height (H) mm	1650	1650	1650	1650	1900	1900
Max width (W) mm	1000	1000	1000	1000	1300	1300
Max length (L) mm	1950	2350	2650	2950	3150	4150
Drum length (Lc)	500	1000	1200	1500	2000	3000
Drum diameter (d)	628	628	628	628	914	914
Inlet diameter DN	100	150	200	250	300	400
By pass diameter DN	100	150	200	250	300	400
Outlet diameter DN	150	200	250	300	350	500
Installed power Kw	0,37	0,55	0,55	0,75	1,1	1,5

